

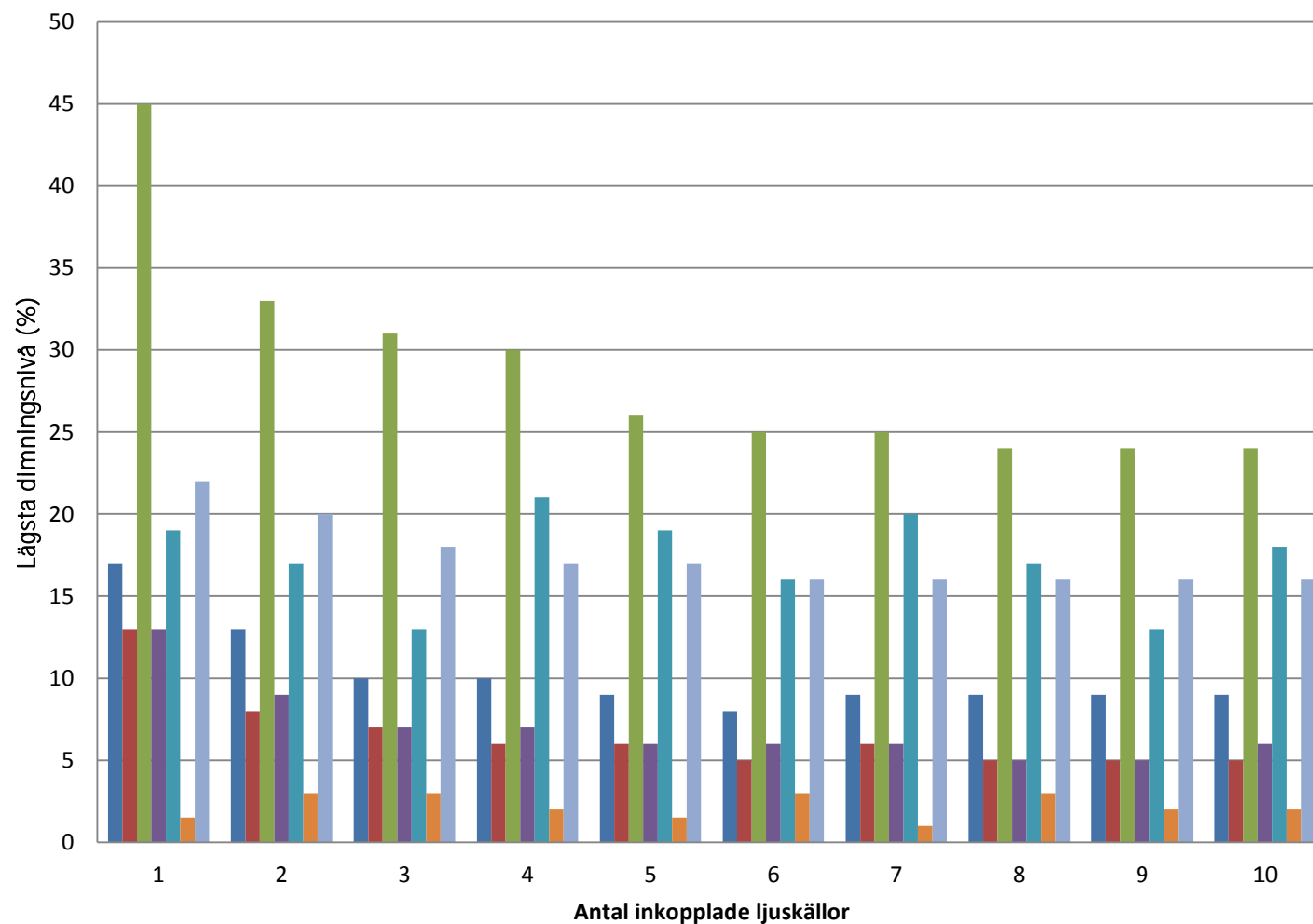
0129-124**Seriekopplade ljuskällor**

Dimmer	1	2	3	4	5	6	7
	OK	OK	OK	OK	OK	OK	OK
Schneider Exxact 40-300W Bakkantsdimmer/Transistor E13 70 602	17-100%	13-100%	10-100%	10-100%	9-100%	8-100%	9-100%
Schneider Eljo Trend 20-315W Bakkantsdimmer/Transistor E13 70 640	OK	OK	OK	OK	OK	OK	OK
	13-100%	8-100%	7-100%	6-100%	6-100%	5-100%	6-100%
ABB VA JUSSI 2-100W LED DIMMER E13 601 35	OK	OK	OK	OK	OK	OK	OK
	45-100%	33-100%	31-100%	30-100%	26-100%	25-100%	25-100%
Elko 315 GLE FV 20-315W Universaldimmer E13 63 141	OK	OK	OK	OK	OK	OK	OK
	13-100%	9-100%	7-100%	7-100%	6-100%	6-100%	6-100%
Eltako Tryckdimmer 0-400W Universaldimmer E13 77 065	OK	OK	OK	OK	OK	OK	OK
	19-100%	17-100%	13-100%	21-100%	19-100%	16-100%	20-100%
Vadsbo LD220 Tryckdimmer 1-200W Universaldimmer E13 774 40	OK	OK	OK	OK	OK	OK	OK
	1,5-100%	3-100%	3-100%	2-100%	1,5-100%	3-100%	1-100%
ACTEC BELID 8788 Bakkantsdimmer	OK	OK	OK	OK	OK	OK	OK
	22-100%	20-100%	18-100%	17-100%	17-100%	16-100%	16-100%

Alla dimmers testade genom att ställas ner så mycket som möjligt och ändå bevara dimmningen.

8	9	10
OK	OK	OK
9-100%	9-100%	9-100%
OK	OK	OK
5-100%	5-100%	5-100%
OK	OK	OK
24-100%	24-100%	24-100%
OK	OK	OK
5-100%	5-100%	6-100%
OK	OK	OK
17-100%	13-100%	18-100%
OK	OK	OK
3-100%	2-100%	2-100%
OK	OK	OK
16-100%	16-100%	16-100%

0129-124



■ Schneider Exxact 40-300W

■ Schneider Eljo Trend 20-315W

■ ABB VA JUSSI 2-100W

■ Elko 315 GLE FV 20-315W

■ Eltako Tryckdimmer 0-400W

■ Vadsbo LD220 Tryckdimmer 1-200W

■ ACTEC BELID 8788