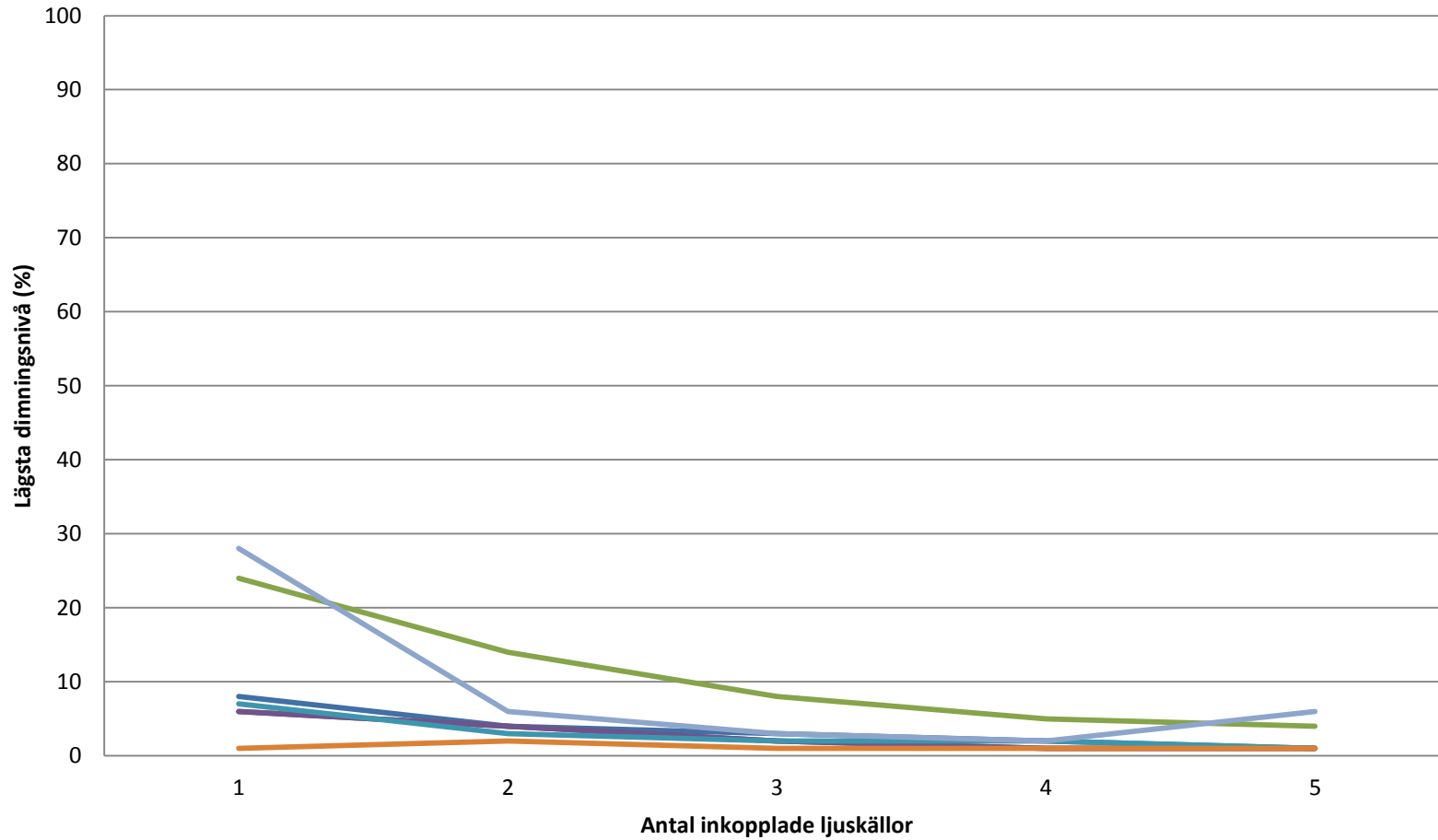


S6849

Dimmer	Antal inkopplade				
	1	2	3	4	5
Schneider Exxact 40-300W Bakkantsdimmer/Transistor E13 70 602	OK	OK	OK	OK	OK
	8-100%	4-100%	3-100%	2-100%	1-100%
Schneider Eljo Trend 20-315W Bakkantsdimmer/Transistor E13 70 640	OK	OK	OK	OK	OK
	6-100%	4-100%	2-100%	1-100%	1-100%
ABB VA JUSSI 2-100W LED DIMMER E13 601 35	OK	OK	OK	OK	OK
	24-100%	14-100%	8-100%	5-100%	4-100%
Elko 315 GLE FV 20-315W Universaldimmer E13 63 141	OK	OK	OK	OK	OK
	6-100%	4-100%	2-100%	1-100%	1-100%
Eltako Tryckdimmer 0-400W Universaldimmer E13 77 065	OK	OK	OK	OK	OK
	7-100%	3-100%	2-100%	2-100%	1-100%
Vadsbo LD220 Tryckdimmer 1-200W Universaldimmer E13 774 40	OK	OK	OK	OK	OK
	1-100%	2-100%	1-100%	1-100%	1-100%
ACTEC BELID 8788 Bakkantsdimmer	OK	OK	OK	OK	OK
	28-100%	6-100%	3-100%	2-100%	6-100%

Alla dimmers testade genom att ställas ner så mycket som möjligt och ändå bevara dimmningen.

S6849



Schneider Exxact 40-300W

Schneider Eljo Trend 20-315W

ABB VA JUSSI 2-100W

Elko 315 GLE FV 20-315W

Eltako Tryckdimmer 0-400W

Vadsbo LD220 Tryckdimmer 1-200W

ACTEC BELID 8788